



**NILE BASIN INITIATIVE**  
INITIATIVE DU BASSIN DU NIL



Strategies for Effective Monitoring and  
Management of Plastic Pollution in the Nile Basin  
**Mary Namukose and Jean Namugize**

# Why should we care about Plastic pollution?

- Water quality effects
- Health risks to humans and aquatic organisms,
- Flood risks,
- Impairing water and transport infrastructure,
- Increasing population- consumer behavior



**PLASTICS IN THE OCEAN**

Plastics are the most common form of marine debris. They can come from a variety of land- and ocean-based **SOURCES**. **ENTER THE WATER** in many ways, and **IMPACT** the ocean and Great Lakes. Once in the water, plastic debris never fully biodegrades.

**COMMONLY FOUND PLASTICS**

- Cigarette Butts
- Food Wrappers
- Beverage Bottles
- Shoes
- Cups & Plates
- Bottle Caps
- Single Use Bags

**HOW TO HELP?**

- REFUSE: Don't buy or use products with unnecessary plastic.
- REUSE: Buy products with reusable packaging.
- RECYCLE: Recycle properly.
- REPAIR: Repair items instead of replacing them.
- RECYCLE: Recycle properly.
- REUSE: Buy products with reusable packaging.
- REPAIR: Repair items instead of replacing them.

**MICROPLASTICS**  
Microplastics are small plastics less than 5mm. They can come from large plastics breaking down, or can be produced as small plastics such as microbeads, which can be found in products such as facepours and face wash.

**ENTANGLEMENT**  
Marine life can get caught and killed in discarded fishing nets and other plastic debris.

**BOATS/NETS**  
Fishing gear can become marine debris when it is lost or abandoned.

**INGESTION**  
Animals can easily mistake plastic debris for food.

**RAIN & WINDS**  
Rain and wind can carry debris into nearby waterbodies.

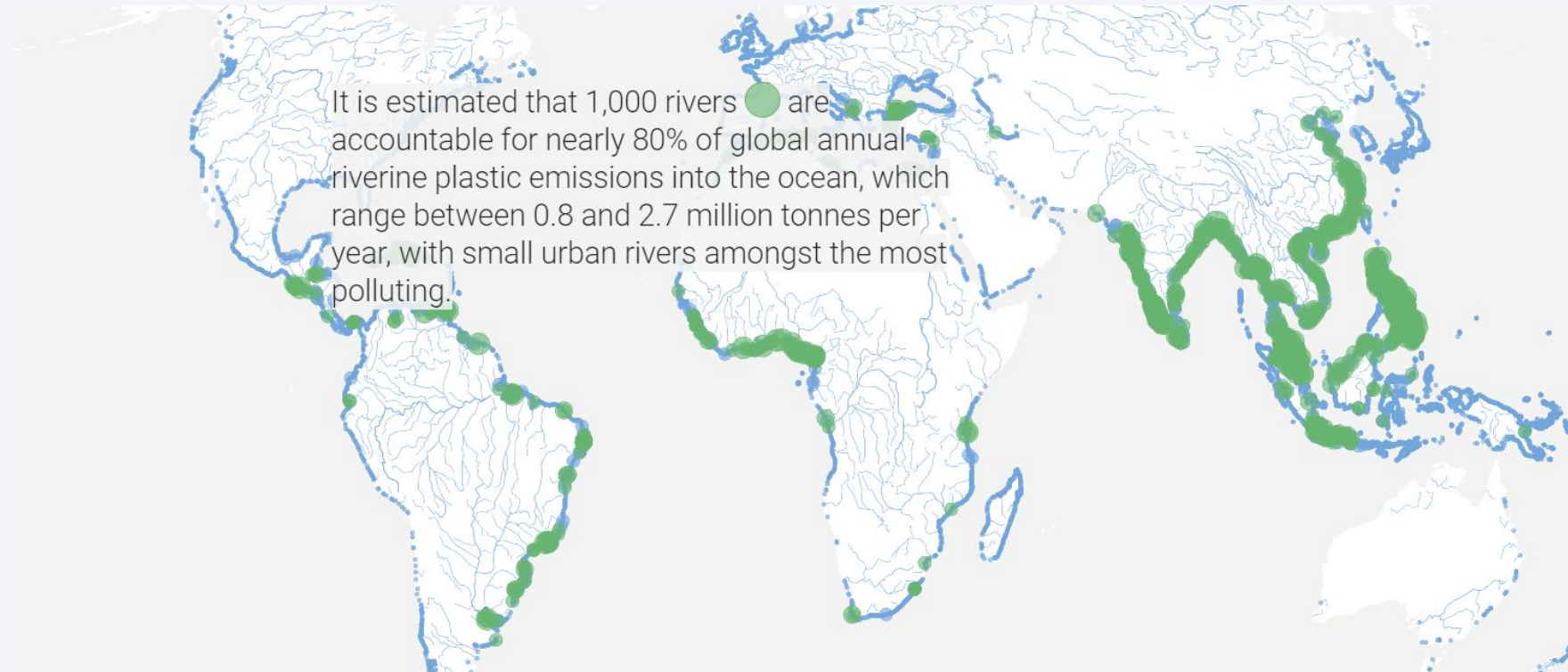
**LITTERING**  
Intentional littering of improper disposal of trash can cause marine debris.

**STREAMS & STORM DRAINS**  
Streams and storm drains can carry debris directly into the ocean or Great Lakes.

NOAA <https://marinedebris.noaa.gov/>

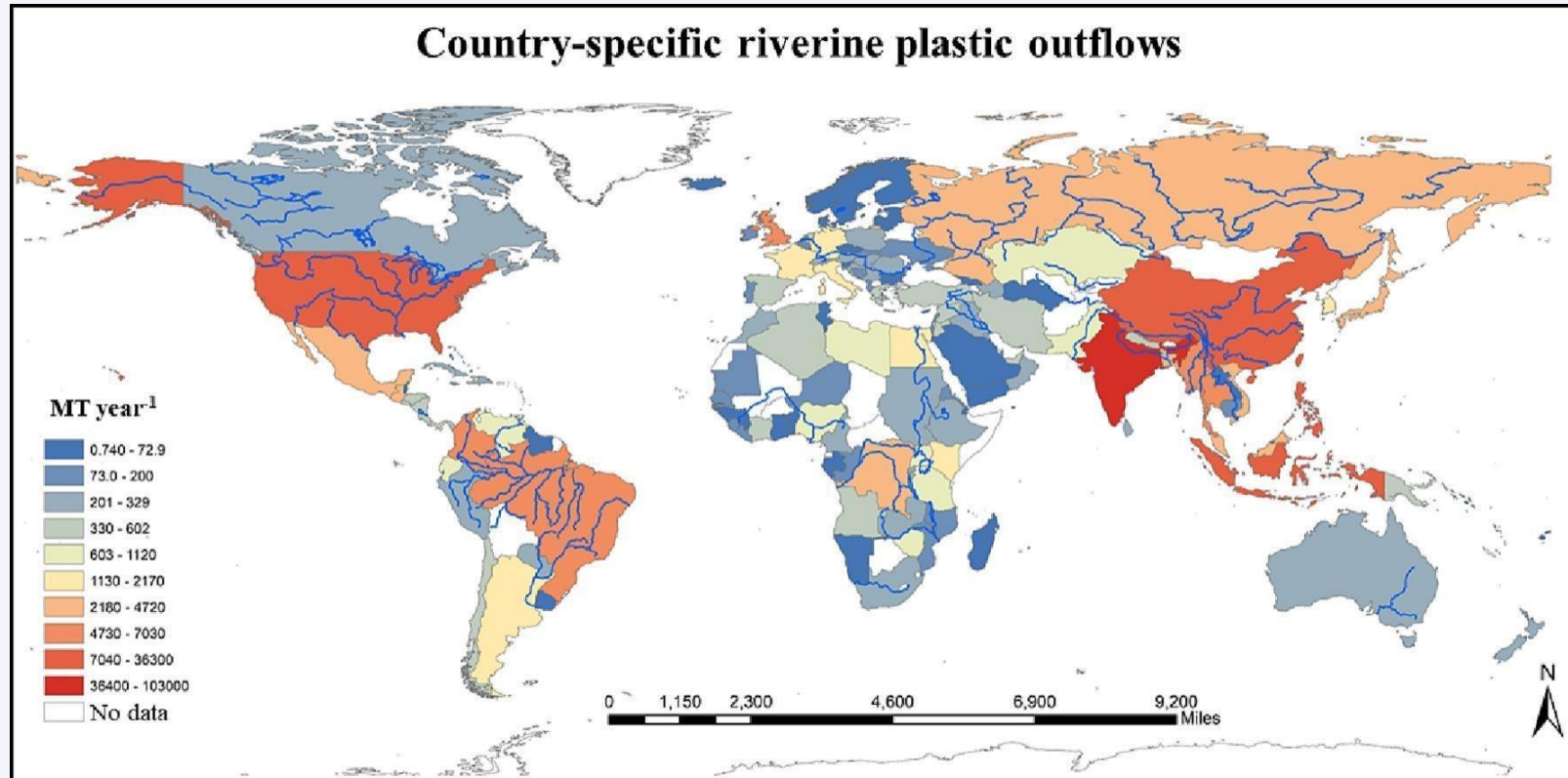


# Overview of Plastic Outflows



Source: UNEP

# Overview of Plastic Outflows



<https://www.sciencedirect.com/science/article/abs/pii/S0048969723011683?via%3Diuhub>



# Is Plastic Pollution an issue in the Nile?

## Environmentalist calls for an urgent solution, as plastic waste bites River Nile

Author: Okot Emmanuel | Published: Wednesday, February 16, 2022

Share with friends: [Facebook](#) [twitter](#)



Plastic Nile: Three-quarters of fish in world's longest river contain microplastics

Sky News has carried out scientific research into plastic pollution in the River Nile, focusing on plastic found inside fish guts.

## The River Nile basin is full of plastic – and it's finding its way onto our dinner plates

Sky News journalist Alex Crawford writes on her experience of making a documentary about the plastic pollution plaguing Lake Victoria



## Pollution of the Nile river in Egypt

📍 Egypt



DAILYNEWSEGYPT > BLOG > EGYPT > NILE AMONG 10 MAIN RIVERS

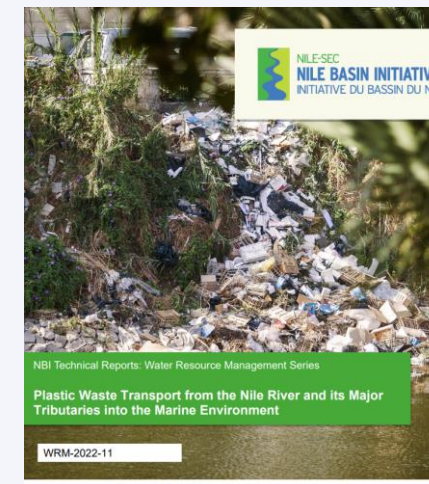
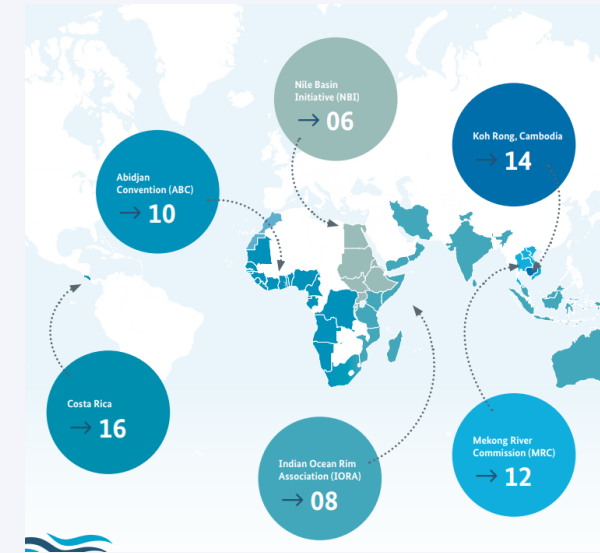
[EGYPT](#) [POLITICS](#)

## Nile among 10 main rivers carrying plastic pollutants into oceans

BY [MOHAMMED EL-SAID](#) | 3 MIN READ | [SAVE IT](#)  
LAST UPDATED: 2017/12/16 AT 5:52 PM

# The scoping study on plastic waste transport

- Supported by the GIZ's Global Marine Litter Project
- The scoping study outlines the status of plastic waste management policy and practice in all the Nile Basin countries.
- It attempted a first mapping of plastic waste source hotspots.
- Despite the severity of plastic pollution, little is known to about the pathways from source to sea
- Outlines the need to better understand, monitor and report the sources and transport mechanisms of plastic waste into lake and river system
- Detailed report can be found [here](#)





# Challenges in monitoring plastic pollution the Nile Basin

- Inadequate management of plastic pollution at local and regional levels;
- Mismanagement of plastic waste that end in water systems;
- Limited knowledge, information and human capacity on identification of the sources and quantification of plastic waste in the basin;
- Few studies on transport mechanisms of plastic waste into the basin;
- Lack of harmonized policies and strategies on management and monitoring of plastic pollution in the basin.
- Uncoordinated efforts to monitor plastics in the Nile Basin



Littered plastic polluting water bodies in Addis Ababa. Copyright: GIZ

# Marine pollution Project- Phase 2

- Conduct a baseline study on existing approaches for monitoring macro plastics in the Nile Basin by different actors (government, civil society, private sector, etc.) E.g.; Citizen science approaches)
- Strengthen the capacity of the Nile Basin member states in monitoring macro-plastics in the Nile Basin.
- Develop an action plan to monitor plastic pollution in the Nile Basin



Photo: End Plastic Pollution





**NILE BASIN INITIATIVE**  
INITIATIVE DU BASSIN DU NIL

**THANK  
YOU!**

