



NILE BASIN INITIATIVE
INITIATIVE DU BASSIN DU NIL



Impact-based flood forecasting in the Greater Horn of Africa

Lorenzo Alfieri, CIMA Foundation

Introduction

Goal

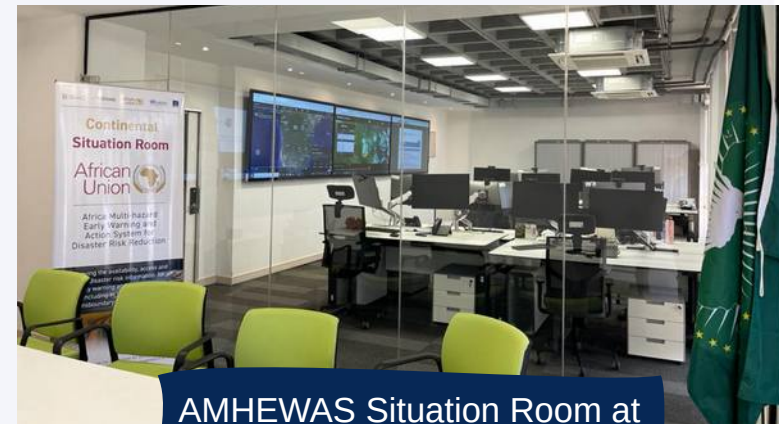
An African Multi-Hazard Early Warning and Action System (AMHEWAS) for Disaster Risk Reduction

Key activities

- Design of legal and institutional framework
- Set up of situation rooms with 24/7 operation and Standard Operating Procedures
- Operational tools for monitoring and forecasting extreme hydro-meteorological events
- Issuing of regular bulletins for hazard monitoring and forecasting
- Capacity building for staff and experts from Member States and RECs

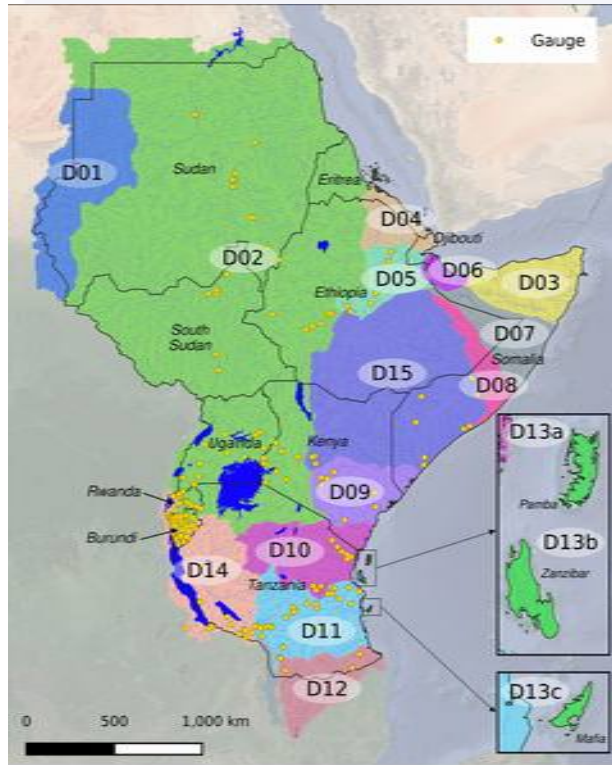


AMHEWAS Conference
Nairobi, October 2021

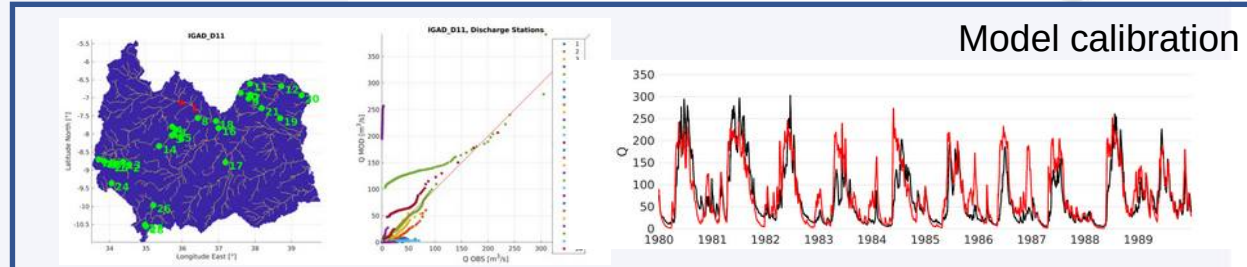
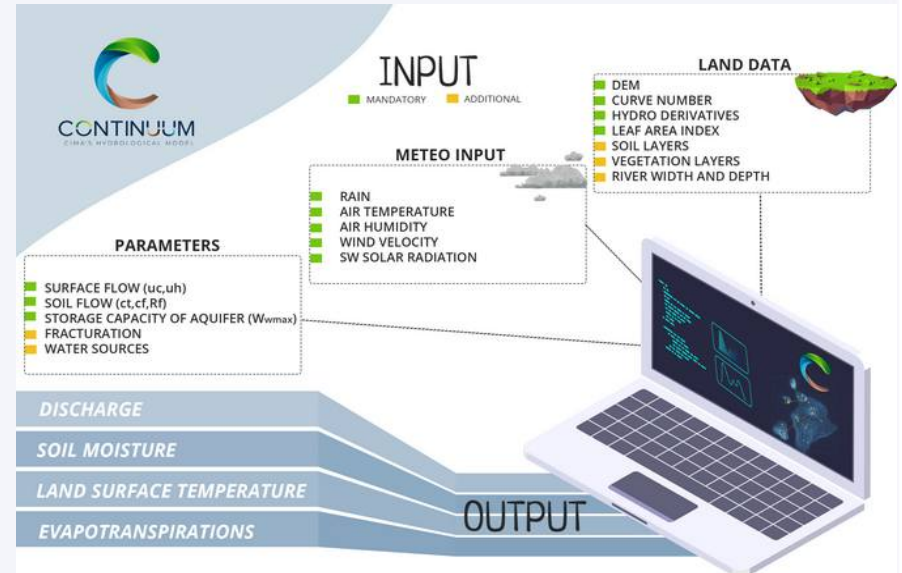


AMHEWAS Situation Room at
AUC Addis Ababa, Ethiopia

Flood-PROOFS East Africa

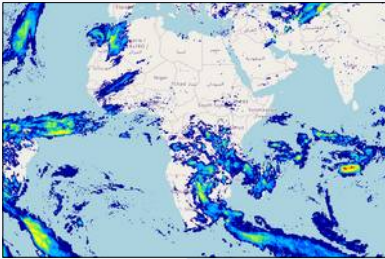


- 11 countries
- 17 domains
- 6.8 million km²
- 250m to 3km grid resolution
- 5-day forecasts

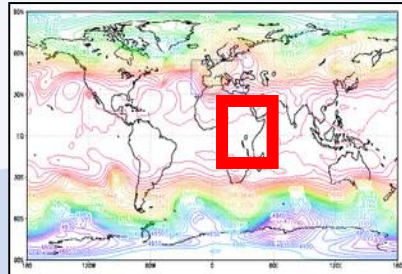


Hazard forecasting

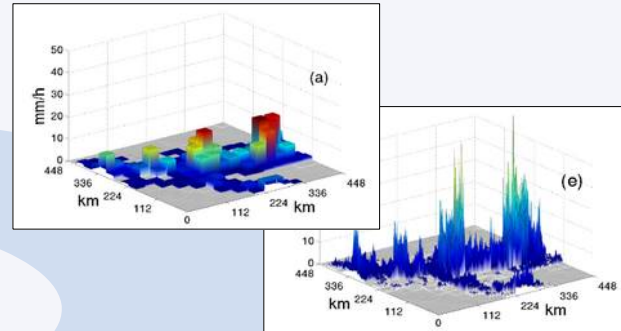
Latest observations



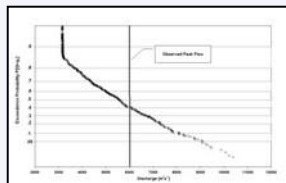
Global or Local meteorological model



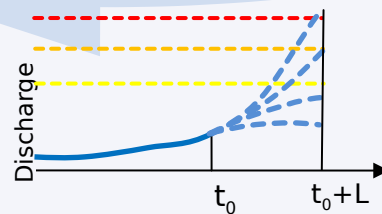
Pre-processing



Hydraulic model

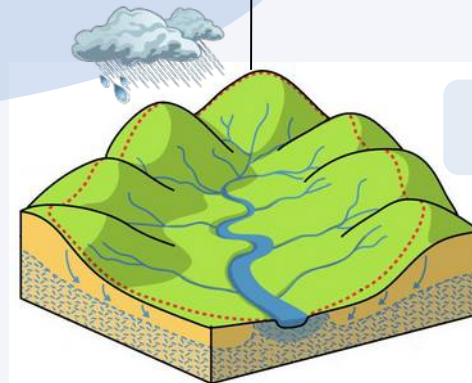


Probability of peak discharge



Discharge forecasts up to 120h

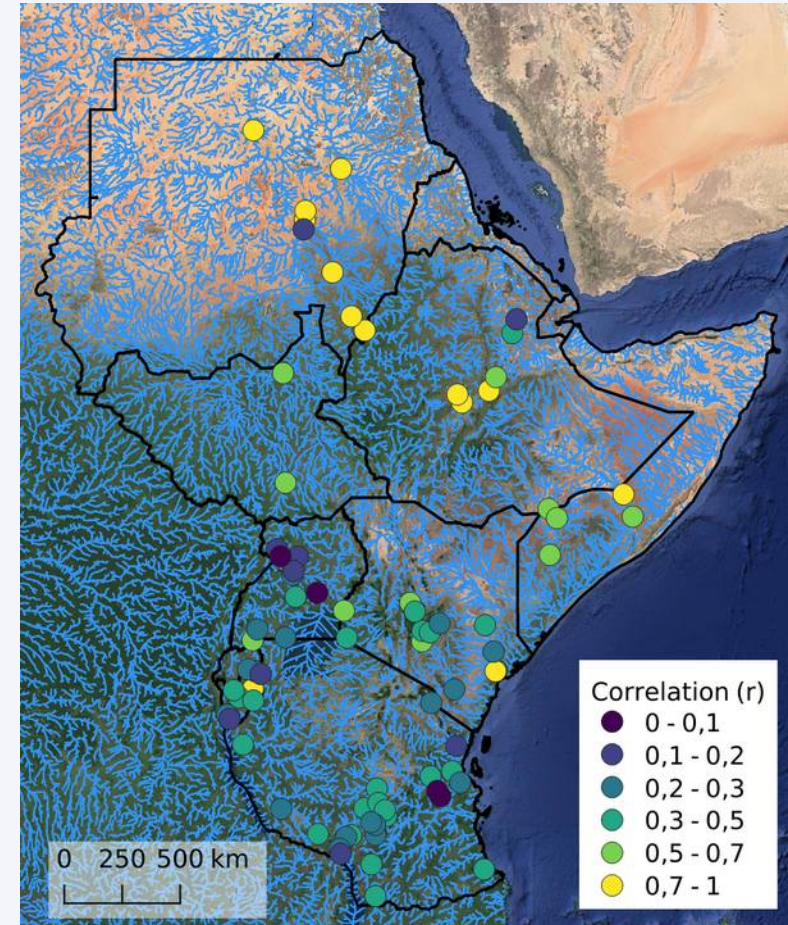
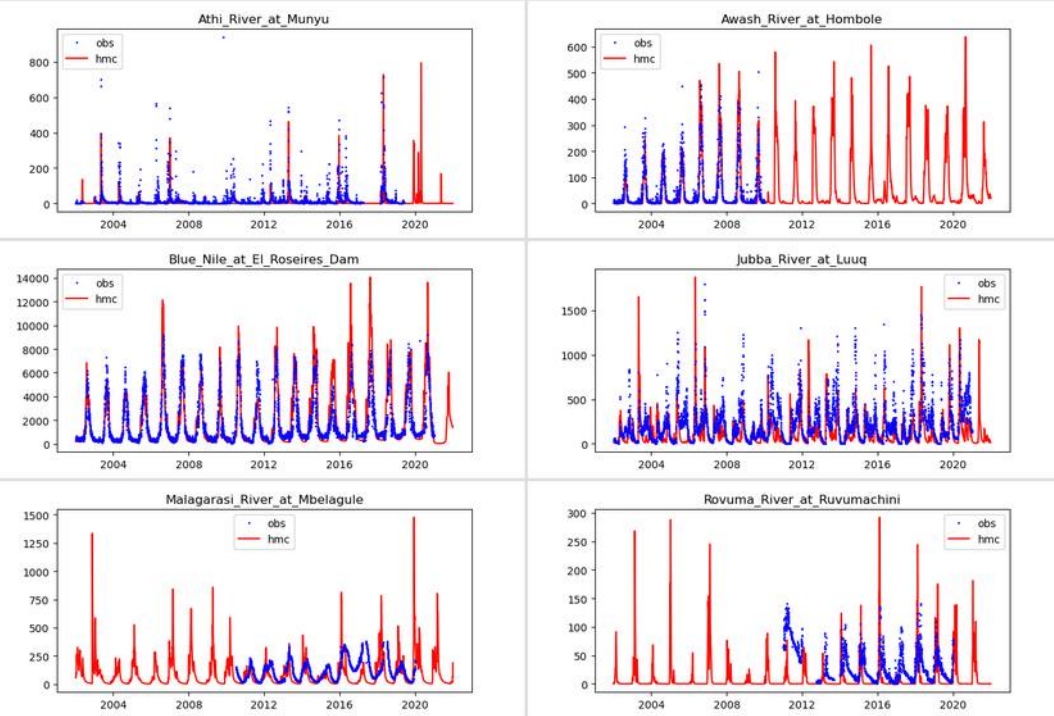
Hydrological model



Early Warning

Calibration results

Model calibrated at 56 river gauges using 3 years of data;
validated at 78 river gauges using up to 20 years of data



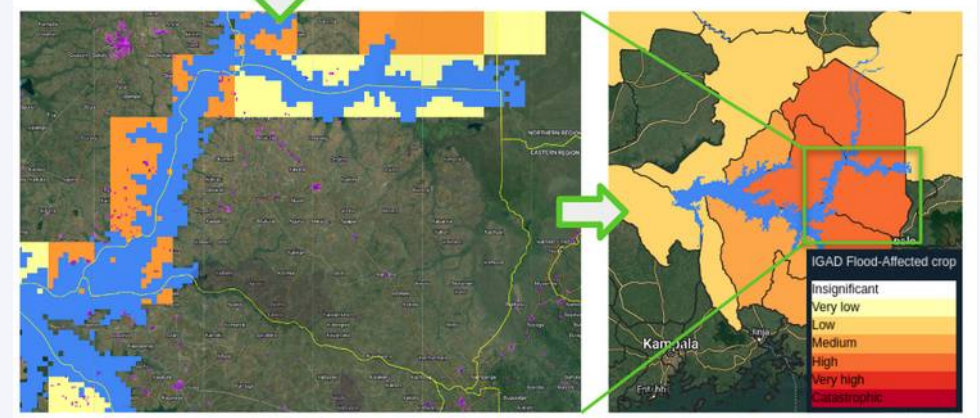
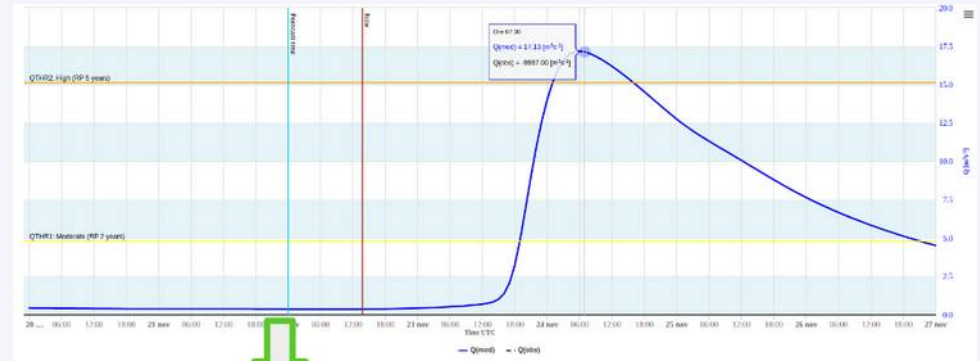
More details in Alfieri et al. (NHSS, 2023)
<https://doi.org/10.5194/egusphere-2023-804>

Impact forecasts

5-day **impact-based forecasts** for the following categories:

- 1) Population affected [-]
- 2) Population displaced [-]
- 3) Crop land affected [ha]
- 4) Grazing land affected [ha]
- 5) Livestock affected [-]
- 6) Roads affected [km]
- 7) Loss of GDP [USD]

Based on deterministic peak flow forecasts from **FloodPROOFS East Africa** and inundation maps.



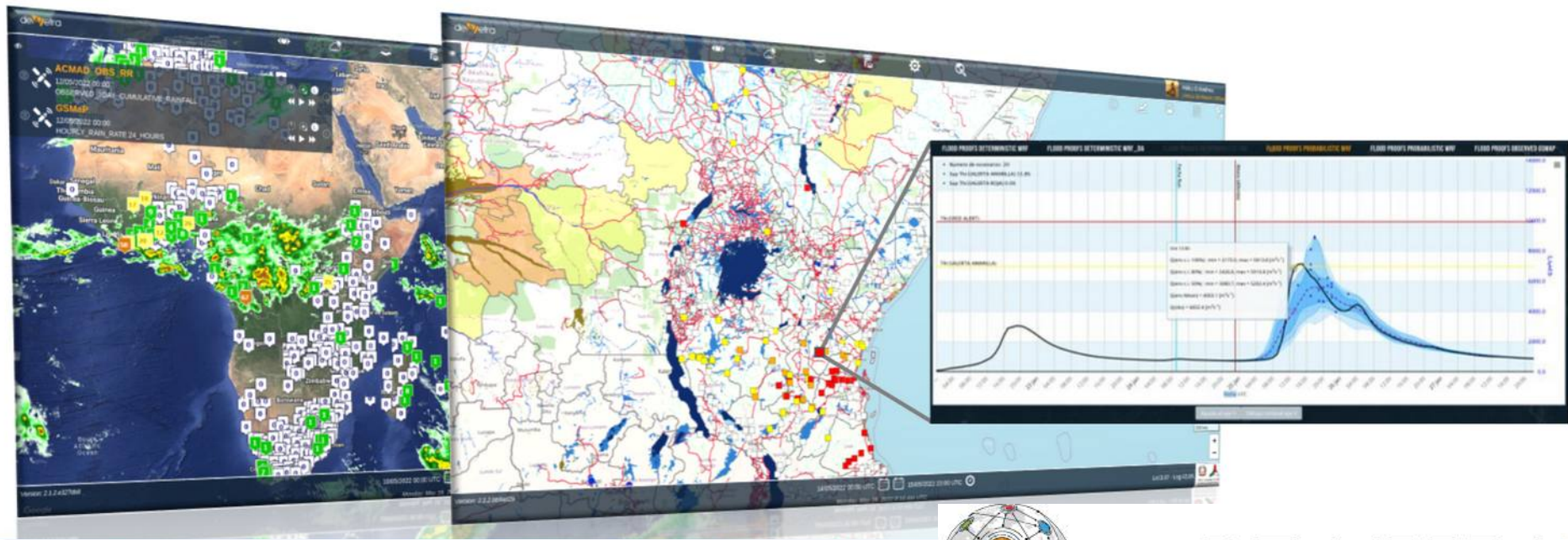
$$\text{Impacts}_{\text{ADMIN}} = \Sigma(H \times \text{Exp}_{\text{HC}}) \times V \times \text{Lcc}$$

Hazard Exposure Vulnerability Lack of coping capacity

myDewetra web interface



MyDewetra is a geospatial visualization platform. It provides a single point of access to environmental information for hazard monitoring, early warning, supporting forecasters and decision-makers in disaster risk management as well as during emergencies

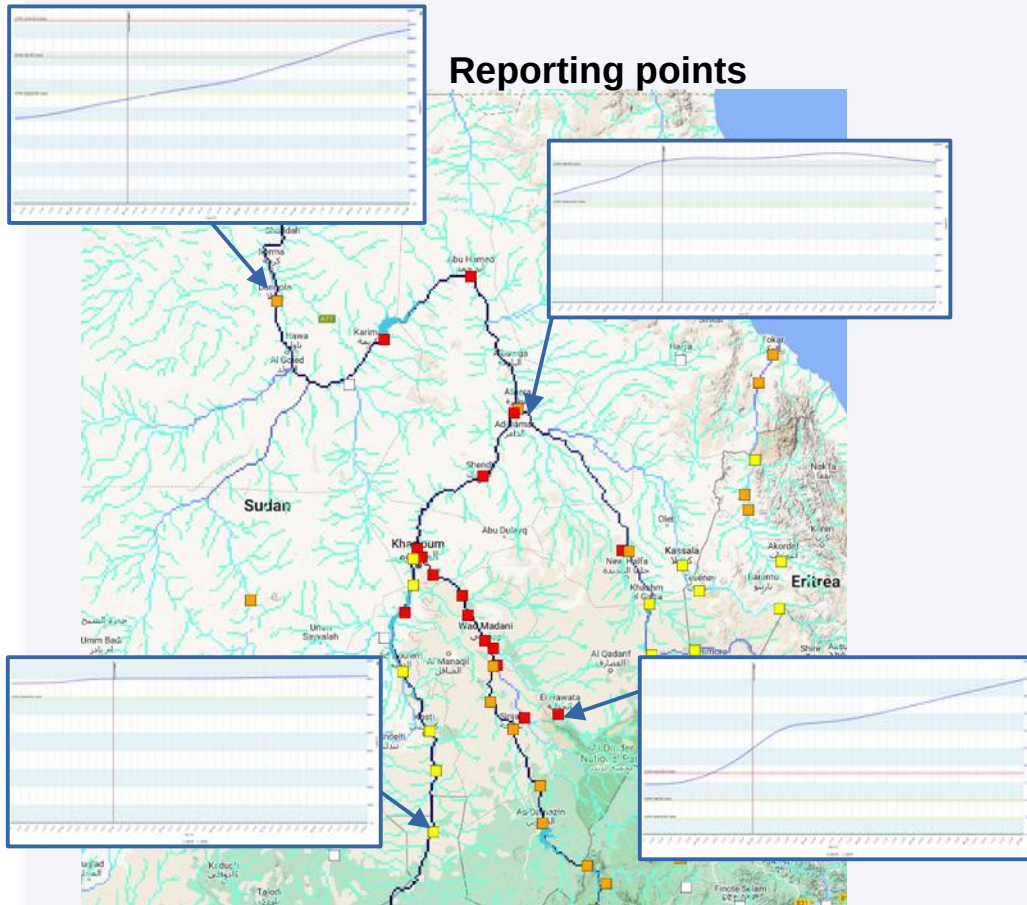


myDEWETRA
world



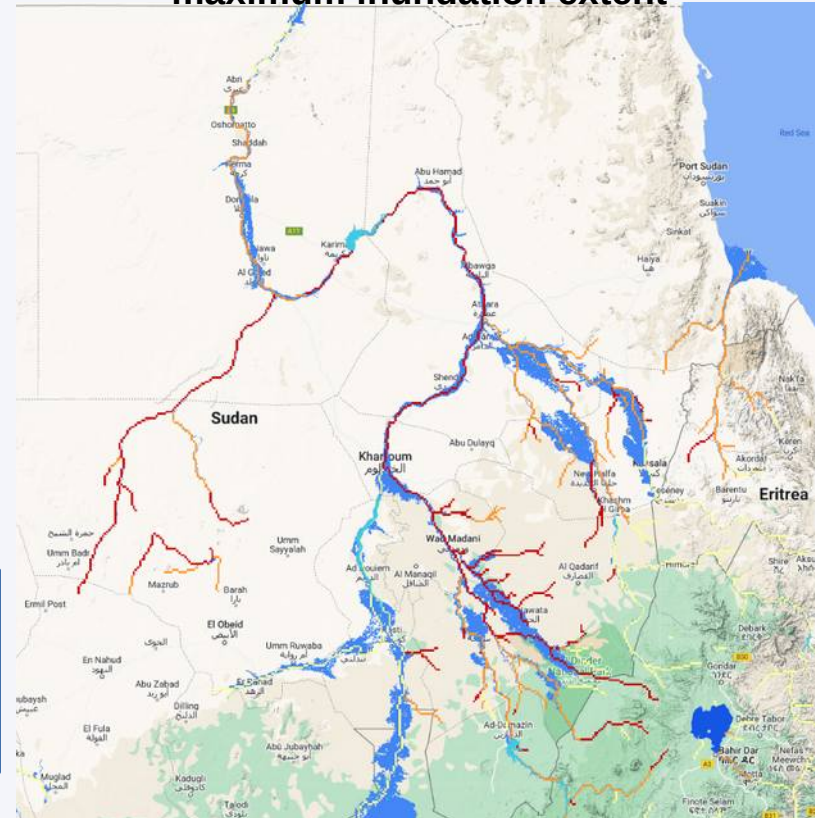
2020 floods in the Nile

Reporting points



Forecast run: 2 September 2020

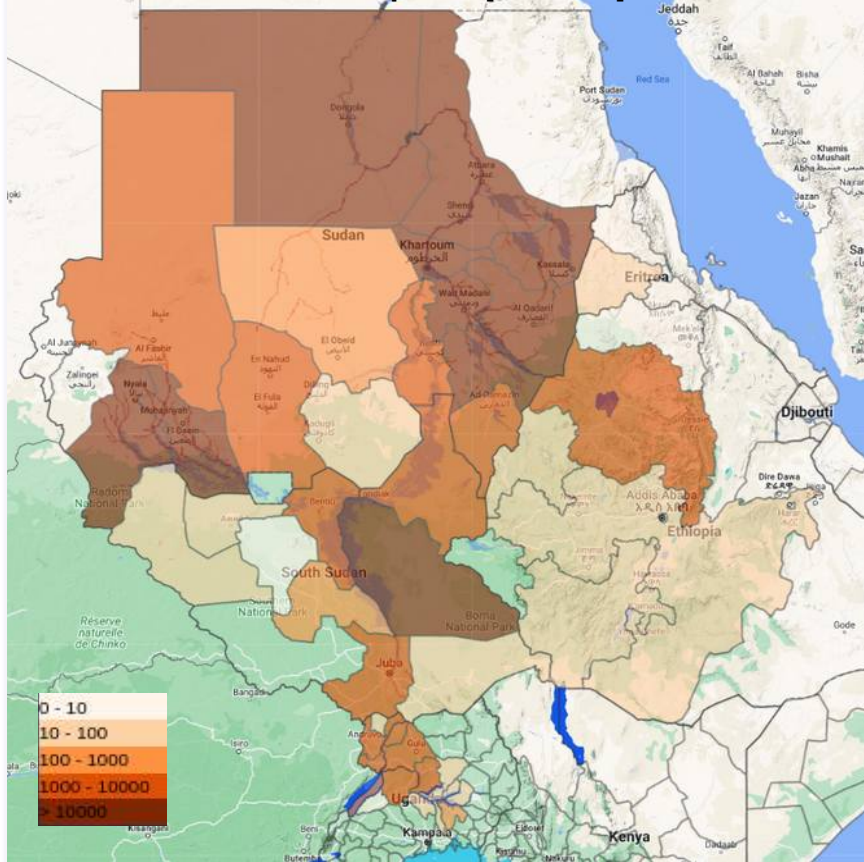
5-day flood hazard levels and maximum inundation extent



Forecast run: 2 September 2020

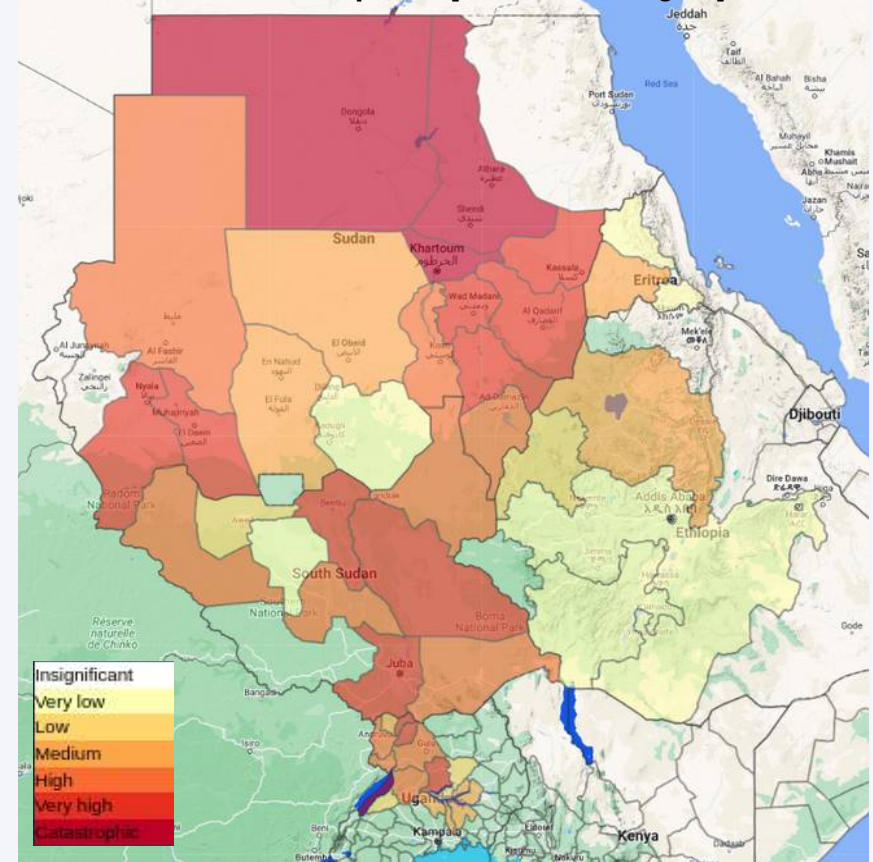
Impact forecasts

Affected cropland [hectares]



Forecast run: 2 September 2020

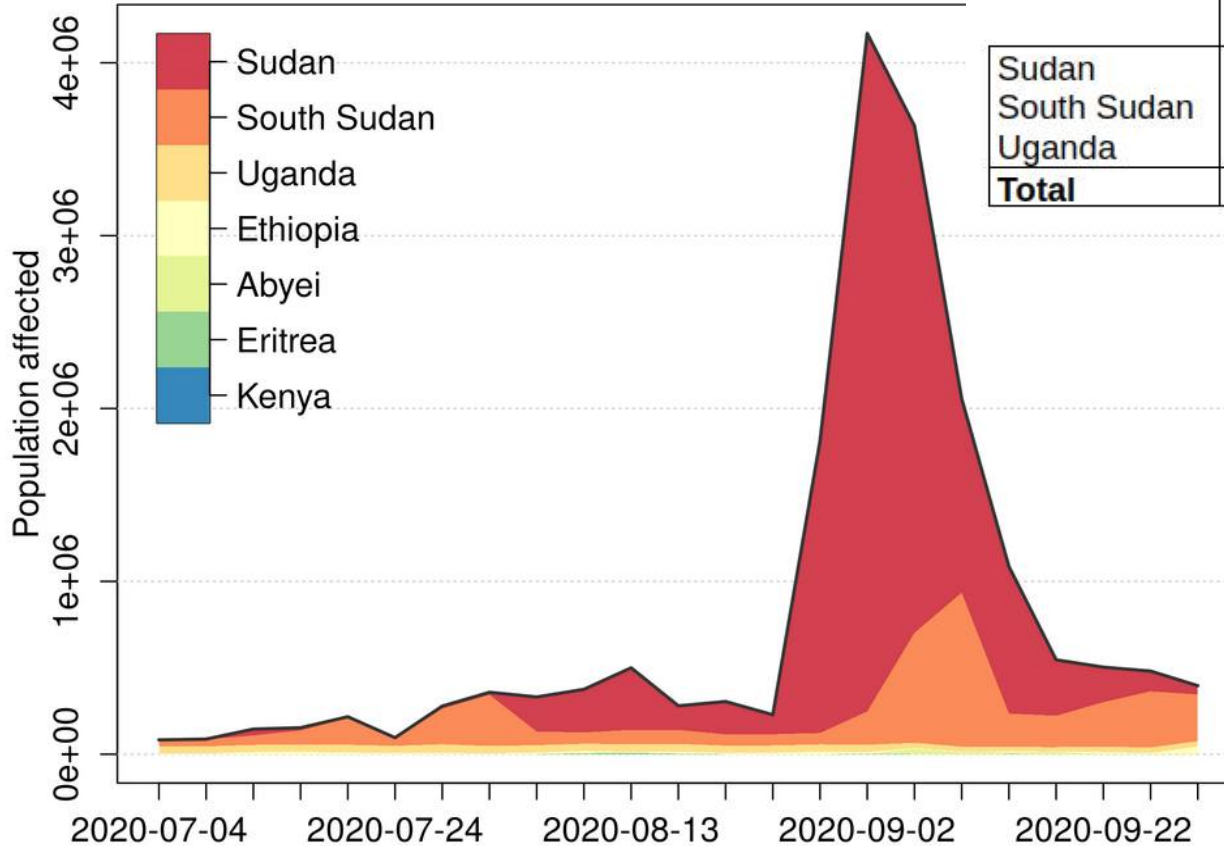
Affected cropland [% of admin region]



Forecast run: 2 September 2020

Population affected

5-day forecasts

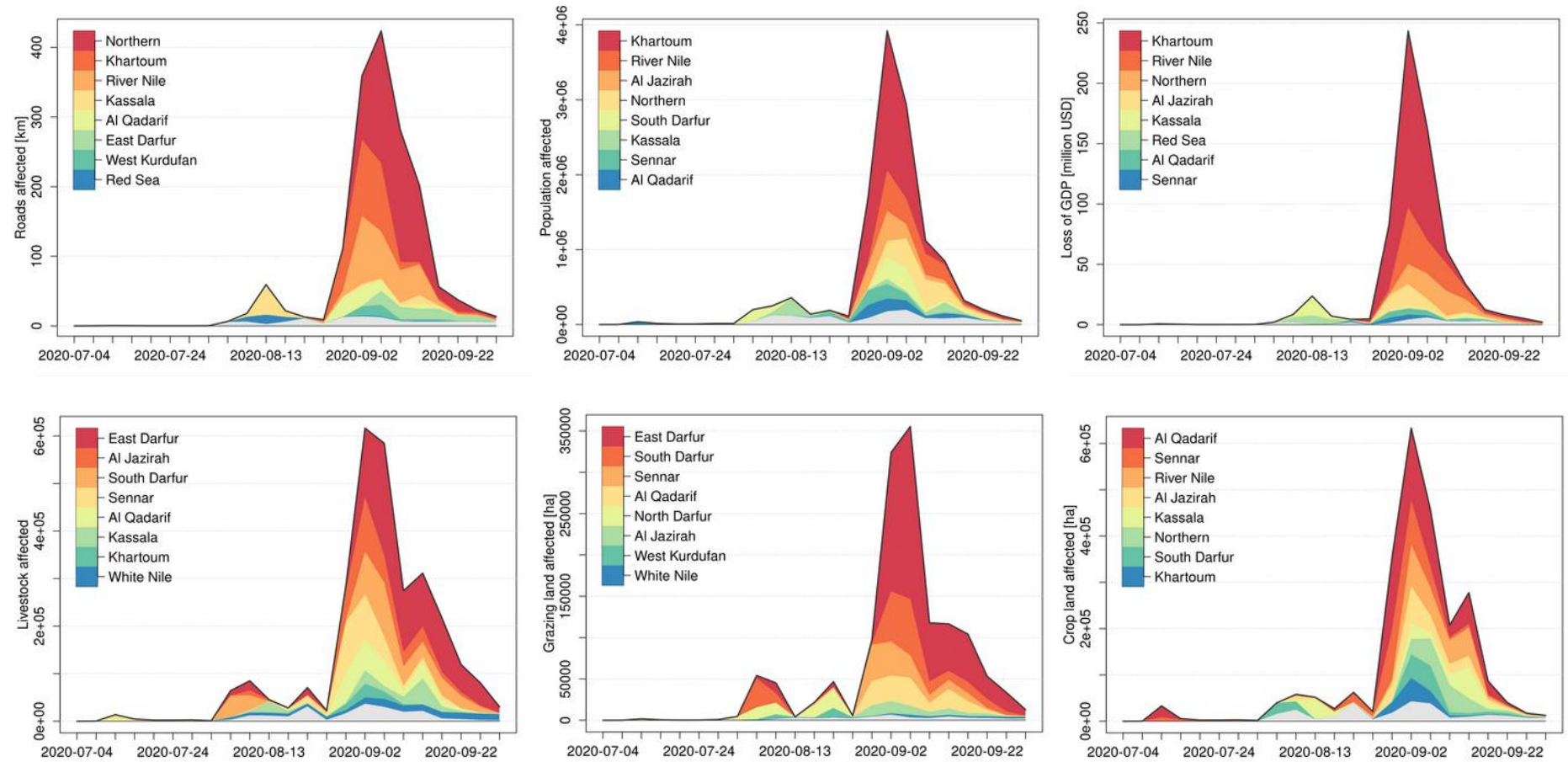


	Population Affected [1,000]		
	EMDAT	FPEA	GloFAS
Sudan	875	3920	39.7
South Sudan	1042	891	184
Uganda	8.7	49	0
Total	1925.7	4860	223.7

Large uncertainty in observed impacts

UN FAO reported as affected nearly one third of cultivated land and about 3 million people from agricultural households in Sudan

Impact forecasts for Sudan states





NILE BASIN INITIATIVE
INITIATIVE DU BASSIN DU NIL



THANK YOU!

Lorenzo.Alfieri@cimafoundation.org