



NILE BASIN INITIATIVE
INITIATIVE DU BASSIN DU NIL

Urban Pollution, the case of Kampala

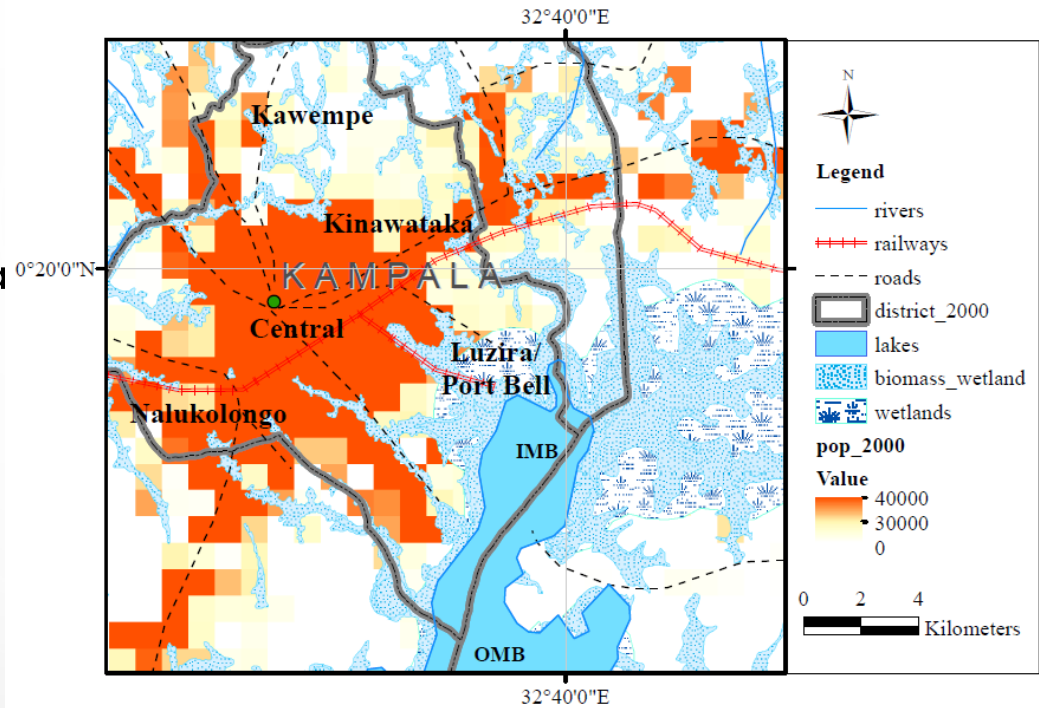
Idrakua Lillian

Commissioner, WQM

Ministry of Water and Environment, Uganda

INTRODUCTION

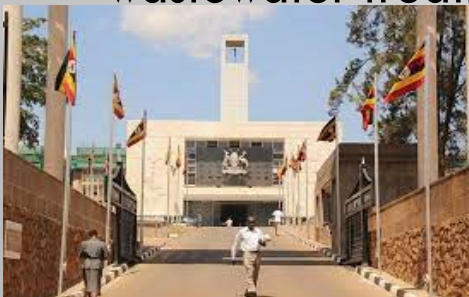
- Kampala is the capital city of Uganda
- Is located at the shore of L. Victoria
- Kampala has a population of 1.5m people (2014 census)
- Sewerage connection in the city is less than 10%
- Most homes use onsite septic tanks
- Informal settlements use pit latrines
- There is a central municipal wastewater treatment plant run by NWSC
- A few industries have their own wastewater treatment facilities



Kasubi tombs



Uganda Martyrs Catholic Shrine Namugongo



THREATS TO WATER QUALITY IN URBAN AREAS



AVOID WATER RESOURCES POLLUTION BY PROPER WASTE MANAGEMENT AND PROTECTION OF WETLANDS, RIVER BANKS & LAKE SHORES

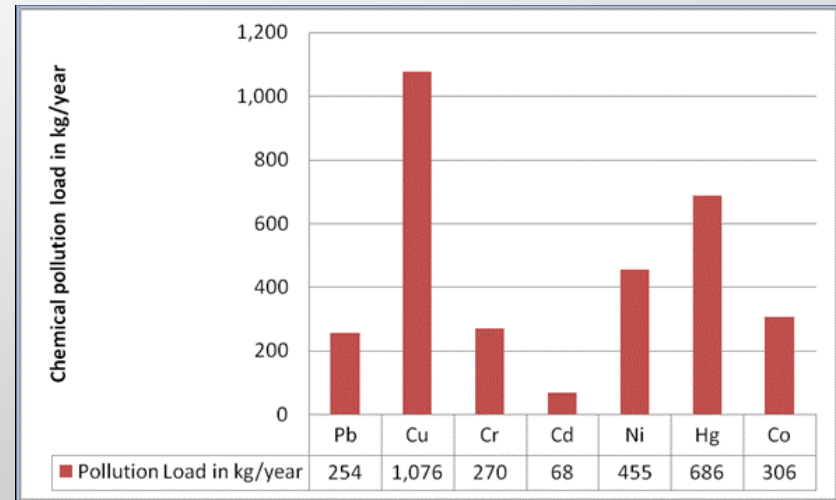
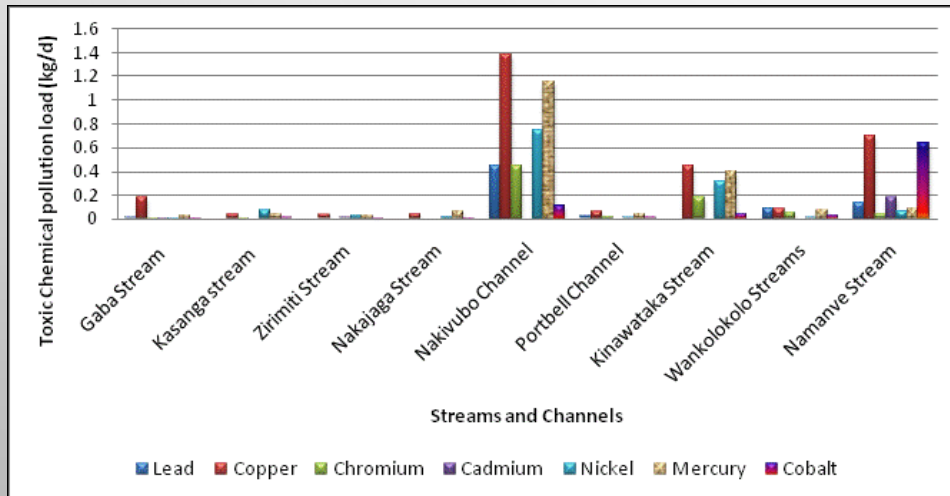
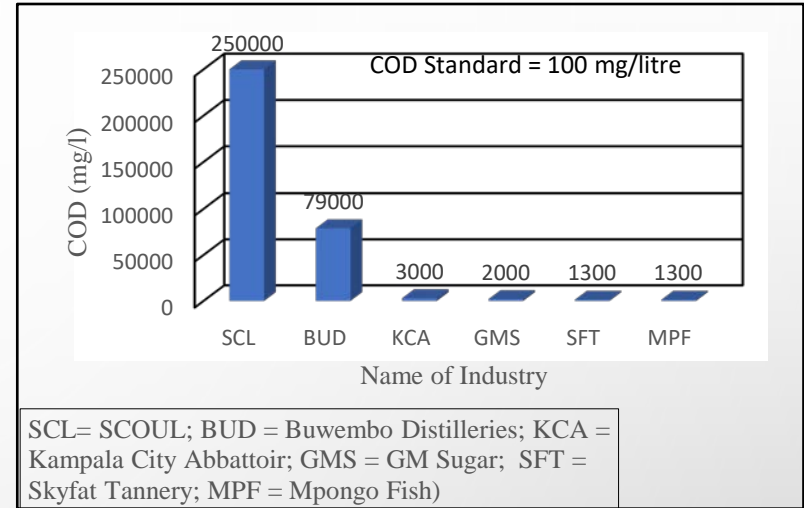
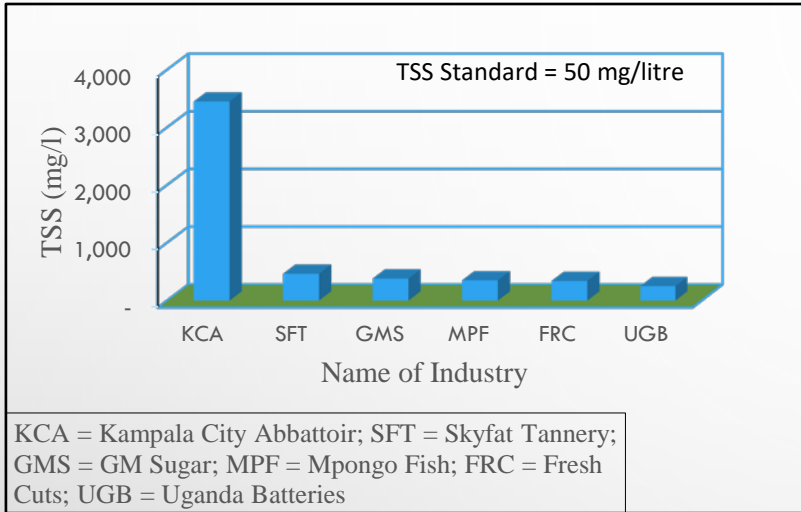
MINISTRY OF WATER & ENVIRONMENT, DIRECTORATE OF WATER RESOURCES MANAGEMENT
DEPARTMENT OF WATER QUALITY MANAGEMENT: P.O BOX 19, ENTEBBE
TEL: (+256) (0) 414 322 440, Fax (+256) (0) 414 321 368, www.mwe.go.ug

POLLUTION CHALLENGES

- There is a complex mix of pollution types from Kampala city
- Nutrient pollution
 - Municipal & industrial waste
 - Atmospheric depositions
- Organic pollution from agricultural activities
- Toxic metal pollution from industries
- Pharmaceutical/medical residues
- Plastic waste
- Sediments from storm run-off

INDUSTRIAL POLLUTION CHALLENGE

- Industrial wastewater compliance level is very low (MWE, SPR 2019/20)



Chemical load into into IMB from Streams

Source: Adongo, 2013

Total annual chemical pollution load into L. Victoria from Kampala city

INDUSTRIAL POLLUTION CHALLENGE

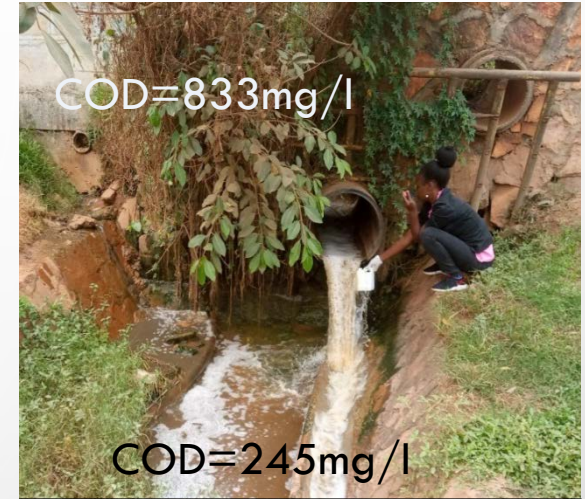
Raw milk discharge



Abattoir discharge



COD=833mg/l



COD=245mg/l

Effluent from a Brewery

Sugar factory effluent

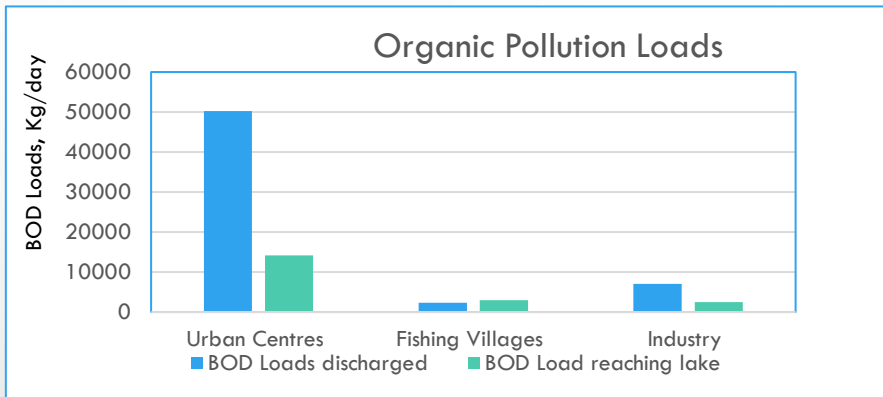


Nakivubo Channel



Leachate' Kitezi Landfill

MUNICIPAL POLLUTION CHALLENGE



Source: LVEMP 1

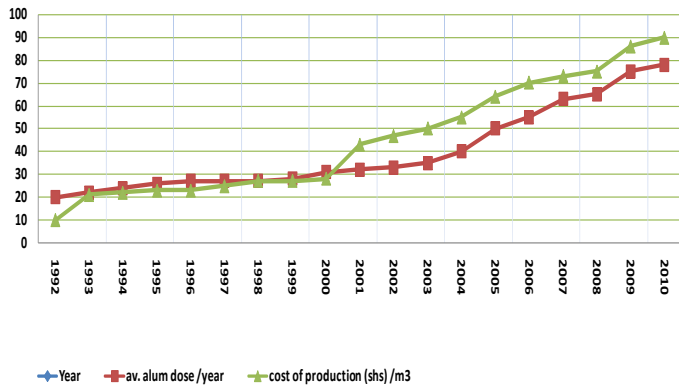
- The Nakivubo Swamp in Kampala is degraded and encroached: Its water purification function is grossly reduced (Mbabazi *et al*, 2010).
- Active wetland vegetation left was 0.57 sq.km in 2014 (Isunju & Kemp, 2016)
- Further reduced to 0.44 sq.Km in 2017 (Odota, 2017)



Photo Courtesy: Odota Dec

POLLUTION IMPACTS

Average Alum Chemical dose (mg/L) Vs Cost of Water Production (shs/m³)



- Impairment of beneficial uses of lake water
- Increased cost of treating drinking water
- Loss of biodiversity; >300 fish species have disappeared (Wasaf, 2021)
- Sedimentation affecting lake morphology, hydraulics
- Water pollution related diseases, algal toxins etc

Eutrophication and associated consequences

- Invasive water weeds such as the water hyacinth
- algal blooms dominated by cyano bacteria
- Fish kills



GOVERNMENT INTERVENTIONS

- Adequate Policy, Laws and Regulations for pollution management
- Relevant Institutions for enforcement of laws and regulations exist
- Several industries establishing wastewater treatment facilities
- Support for industries to implement Resource Efficient and Cleaner Production techniques to minimize waste from industries
- Several ongoing government projects and programs to improve sanitation and reduce environmental pollution

GOVERNMENT INTERVENTIONS



Capacity Development for pollution monitoring



GOVERNMENT INTERVENTIONS

- The New wastewater treatment plant at Bugolobi, 2020
- Design capacity of 45,000 m³/day
- Fully automated units for sludge separation, clarification, biofiltration and biogas production

Uganda Breweries, Kampala

Bidco Uganda, Jinja

Wastewater Treatment
Facilities





NILE BASIN INITIATIVE
INITIATIVE DU BASSIN DU NIL

THANK YOU!