

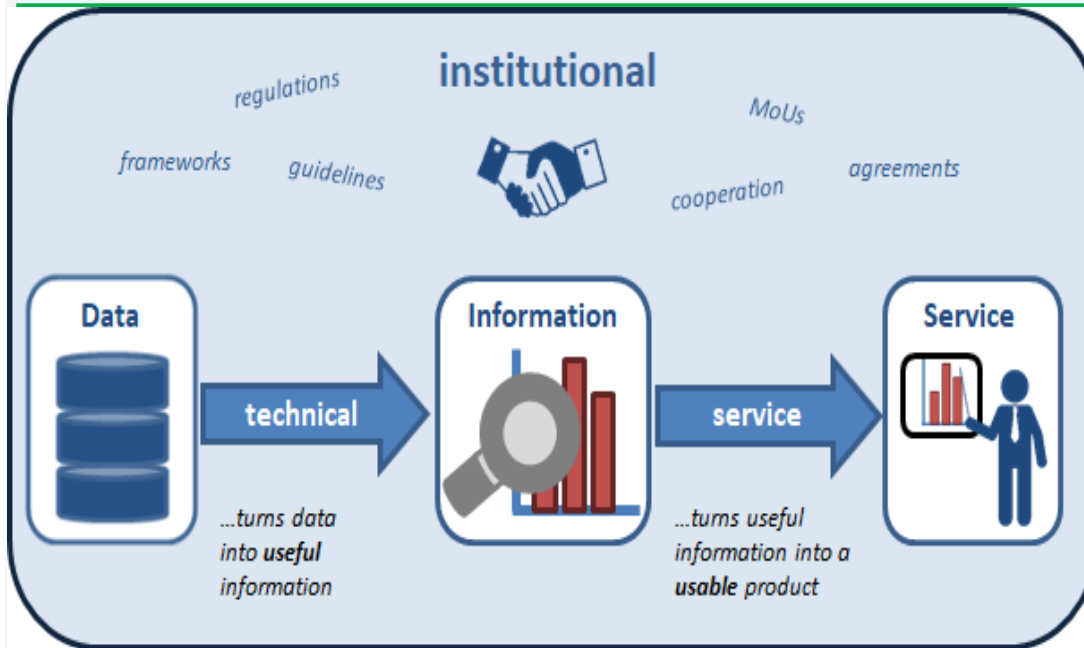


**NILE BASIN INITIATIVE**  
INITIATIVE DU BASSIN DU NIL

# THE NILE BASIN CLIMATE SERVICES

By: Eng. Daniel Opwonya

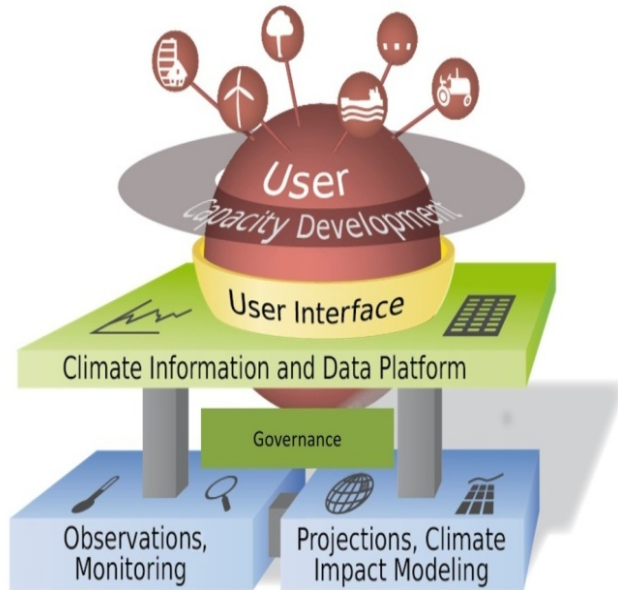
# Climate Services (CS) at the NBI



- The NBI is improving CS by-“**Providing climate information** in a way that assists decision making by individuals and organizations;

- a service requires appropriate engagement along with **an effective access mechanism and must respond to user needs.**

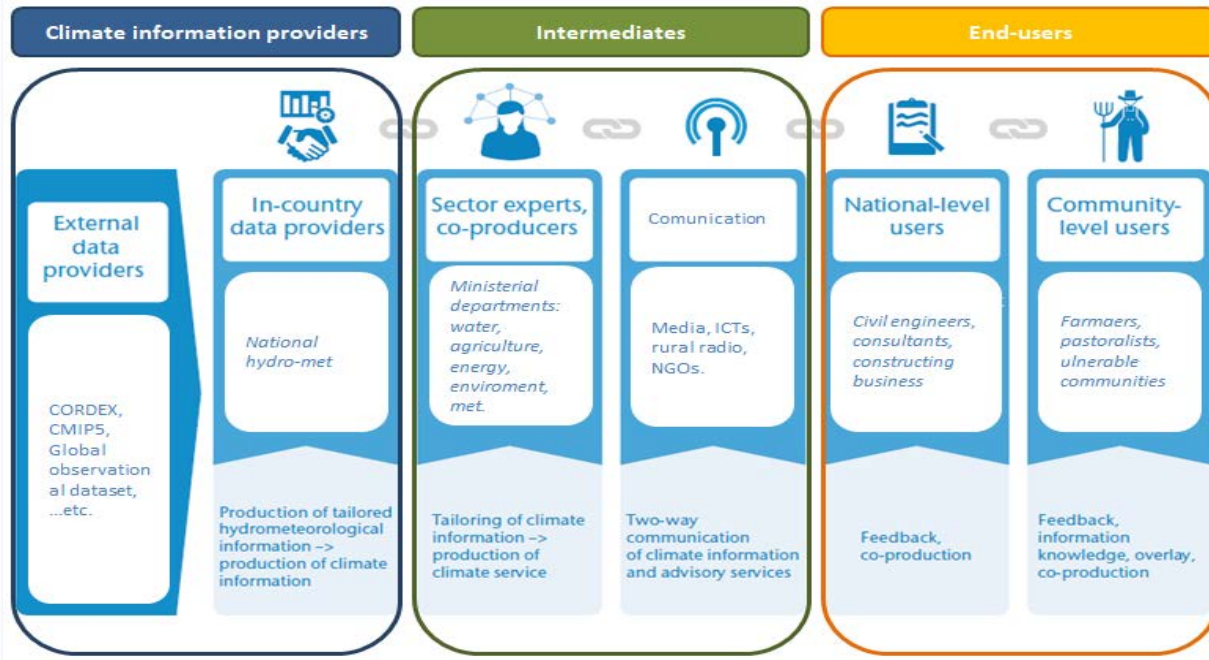
# Climate Services Catalogue(CSC)



- CSC-Climate products and services organized in a systematic and centralized form for easy reference.
- Provide data & information portal to the public to access & analyze observations;
- Dissemination, education, training & capacity Dev. in the Nile Basin;

- **CSC has 13 Products & Services**

# Climate Services Action Plan (CSAP)



▪Ease CSC implementation through **strategic priority activities** meant to improve what already exists by access for end-user & complete products under development or planned.

▪Applies across **technical, service & institutional dimensions** of CS while maintaining relevance to each product or service.

▪Management, quality control and analysis of data and information; **leading to improved forecasts & predictions** for better decisions



# Examples of CSC Products /Services & CSAP (Strategic Activities ) within a Timeframe of 0-3yrs; 4-6yrs; and 7-10yrs



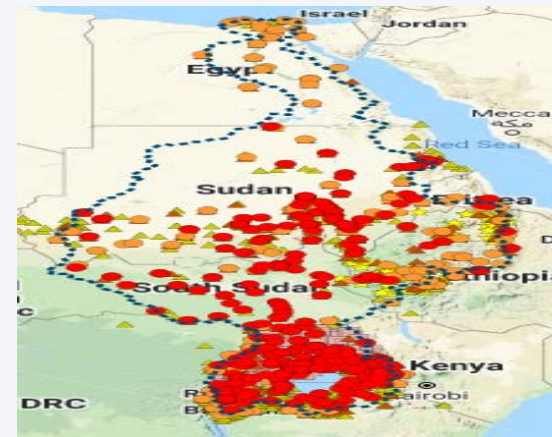
## AP1: Nile Basin Regional Hydrological Monitoring Network



Core Module =  
Climate data &  
value added  
info

CSAP ↓

## AP2: Nile Basin hydro-meteorological data series



- Strengthen **cooperation framework agreements** with the NHMS of NBI countries on **data sharing and equipment installation & operation**;
- Optimize the full functionality** of Hydrological monitoring systems by ensuring the network meets the required **networks density and operational standards**;

- Increase reliability & performance of the data from Nile Basin hydrological monitoring system by **enhancing the process of turning data into info**;



- Increase data sources and quantity for use to info validation derived from products

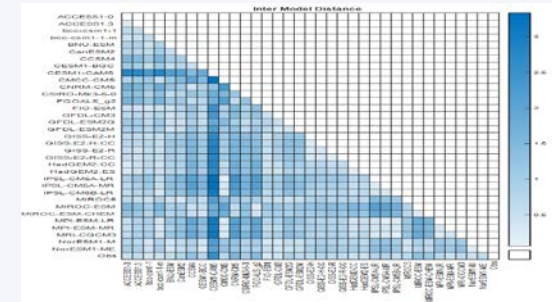
### P1: Nile Basin Hydrological Bulletin



### P3: Hydrological Scenarios for the Nile Basin



### P2: CC Scenarios for the Nile Basin

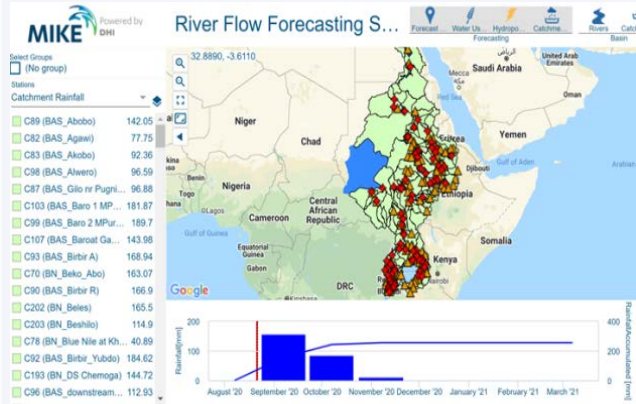


Product Module =  
**Not used for own sake but to add value into others**

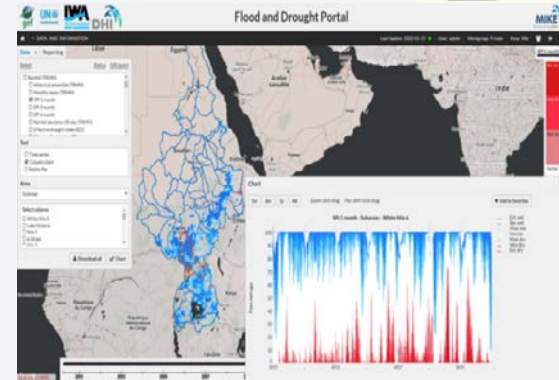
### P4: Flood Early Warning for Eastern Nile



## P5: Nile Basin River Flow Forecasting System



## P6: Drought Forecasting System



CSAP ↓

- Optimize full use of possibilities within a product range by understanding current use & then widening scope;
- Increase reliability & performance of info derived from these products by widening scope of use by getting user-/problem-specific climate info for specific user groups;
- Increase reliability of the information & source of products by testing performance (forecasted/predicted vs. observed);



- Increase specific application & customization of product info. to different user groups & locations;

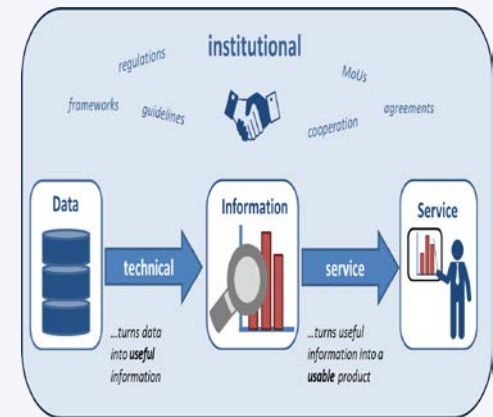
- Improve on costumed tailored information for other specific applications & multipurpose use.

P7: Climate proofing guidance hub for infrastructure and basin planning

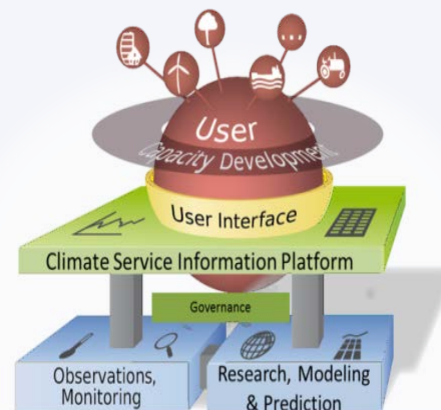


Service Module =  
**Address usability of specific or more**  
**Of previous modules**

P8: Nile Basin Decision Support Tool



P9: Climate Service portal





## P10: Policymakers & Technical Experts Awareness-Raising Pdts



## P11: Capacity Building Pdts



CSAP ↓

- Increase specific application of products to different user groups & locations;
- Improve on costumed tailored info for other specific applications & multipurpose use;
- Provide justification for application of a given CS product with visible results to a particular user or location, etc;
- Improve use, transfer & capacity of the NBI in using the listed products.

- Support dissemination, education, training and **capacity dev.**
- Discover **new pdts for up-take** into the CSC
- Recommend specific measures that **support making pdts used and available** to both the NBI and other stakeholders;
- **Enhance use and extension** to other sectors (e.g. social media, presence at regional and international events ),
- Establish the basis for developing the actionable items for **institutional workflows-**

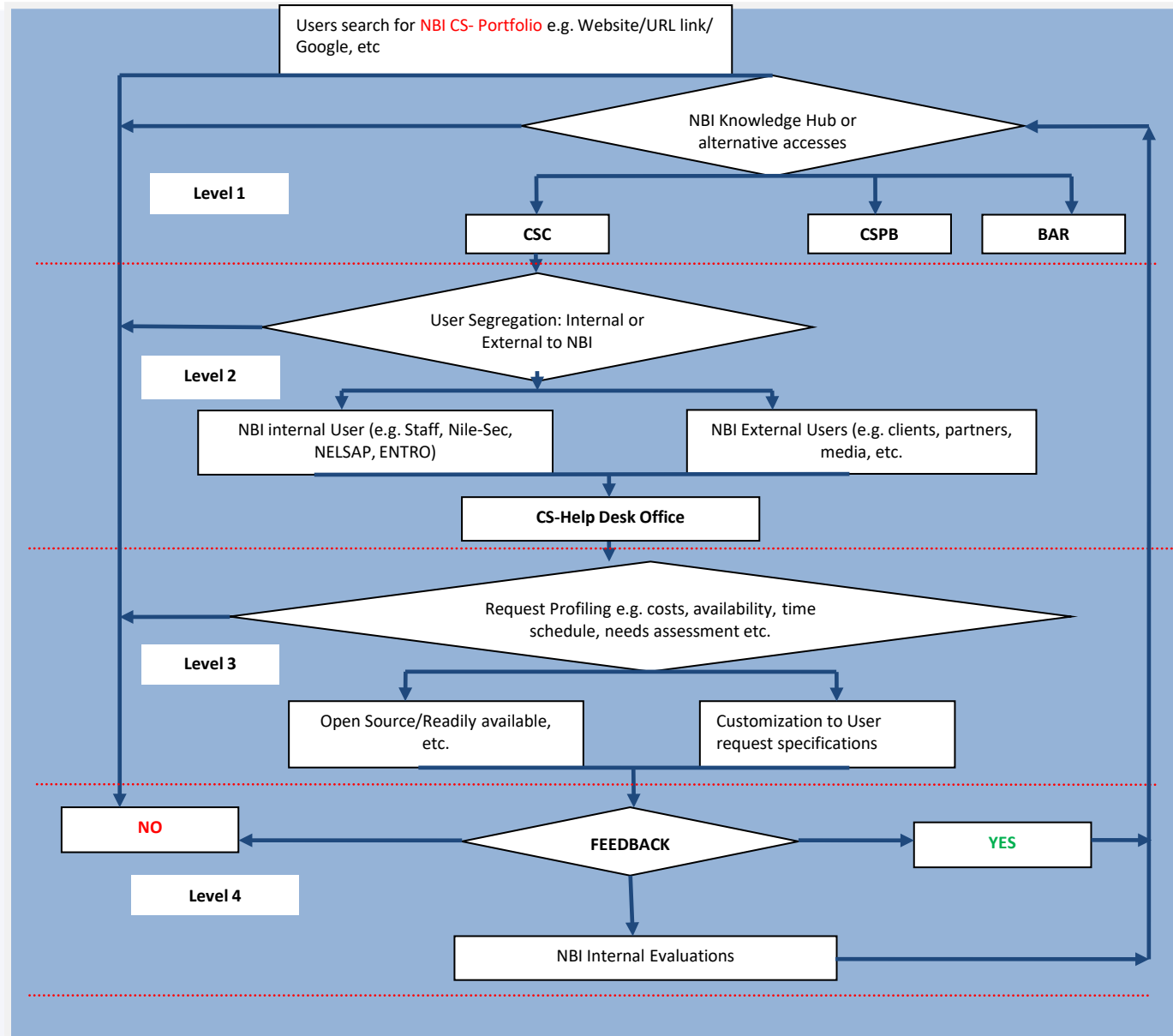
## CS Workflow Manual (CSWFM)

- Level 1: NBI Climate Services Portfolio=details on available services

- Level 2: User Segregation by Type=Internal or External to NBI

- Level 3: Climate Services Request Profiling =Open Source or User Needs Customization)

- Level 4: Feedback and/or Evaluation



# 4 Key Recommendation for the NBI:



- **CSC**-Complete the unfinished & increase on number of products for different user groups & locations;
- Operationalise **CSAP (strategic)** & then operationalise the CS specific action plans & activities;
- **CSWFM**- Introduce a Help Desk to manage ease institutional workflow & recruit CS-Expert to implement CSAPs
- Improve cooperation with regional NMHS and international organizations (ICPAC, WMO, GHACOF, etc.) to leverage on sharing existing products and services to reduce costs, acquire funding and continuously build internal NBI capacities





**NILE BASIN INITIATIVE**  
INITIATIVE DU BASSIN DU NIL



**THANK YOU!**