

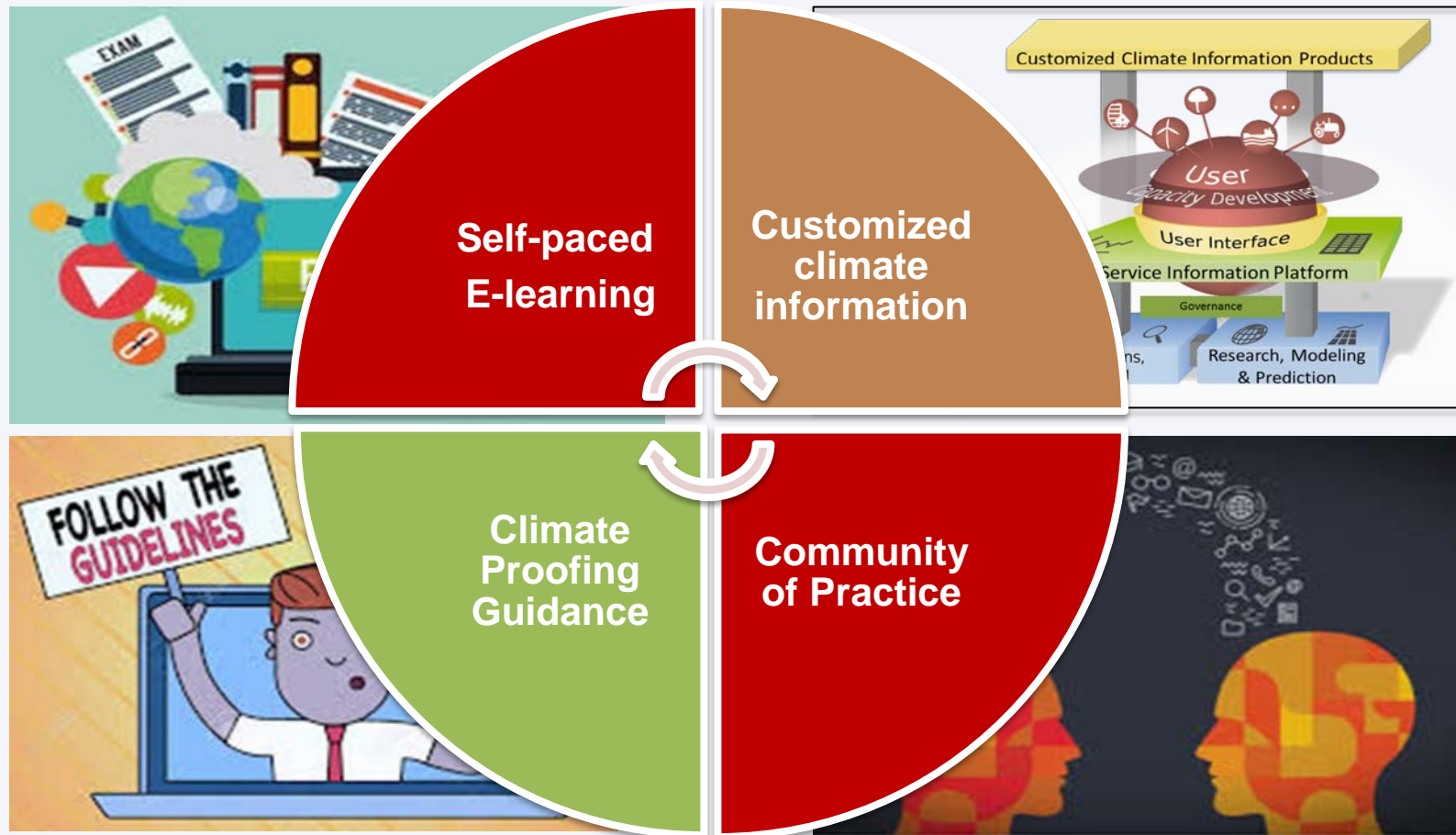


NILE BASIN INITIATIVE
INITIATIVE DU BASSIN DU NIL

E-learning & Community of Practice

Dr. Niklas Baumert / Dr. Modathir Zarough

NBI's New Climate Service Knowledge Management Hub



NBI's Climate Proofing E-learning course



Module 1

Introduction into the Course

Course Rationale

Course Navigation

Course Certification

Module 2:

Climate Change & water infrastructure in the Nile Basin

Climate Change

Climate Risk of Water Infrastructure

Climate Proofing of Infrastructure Investments

Module 3:

Climate Services for Infrastructure Investments

Concept of Climate Services

Access to Climate Services & Data in the Nile Basin

Best Practices for Use of Climate Models

Module 4:

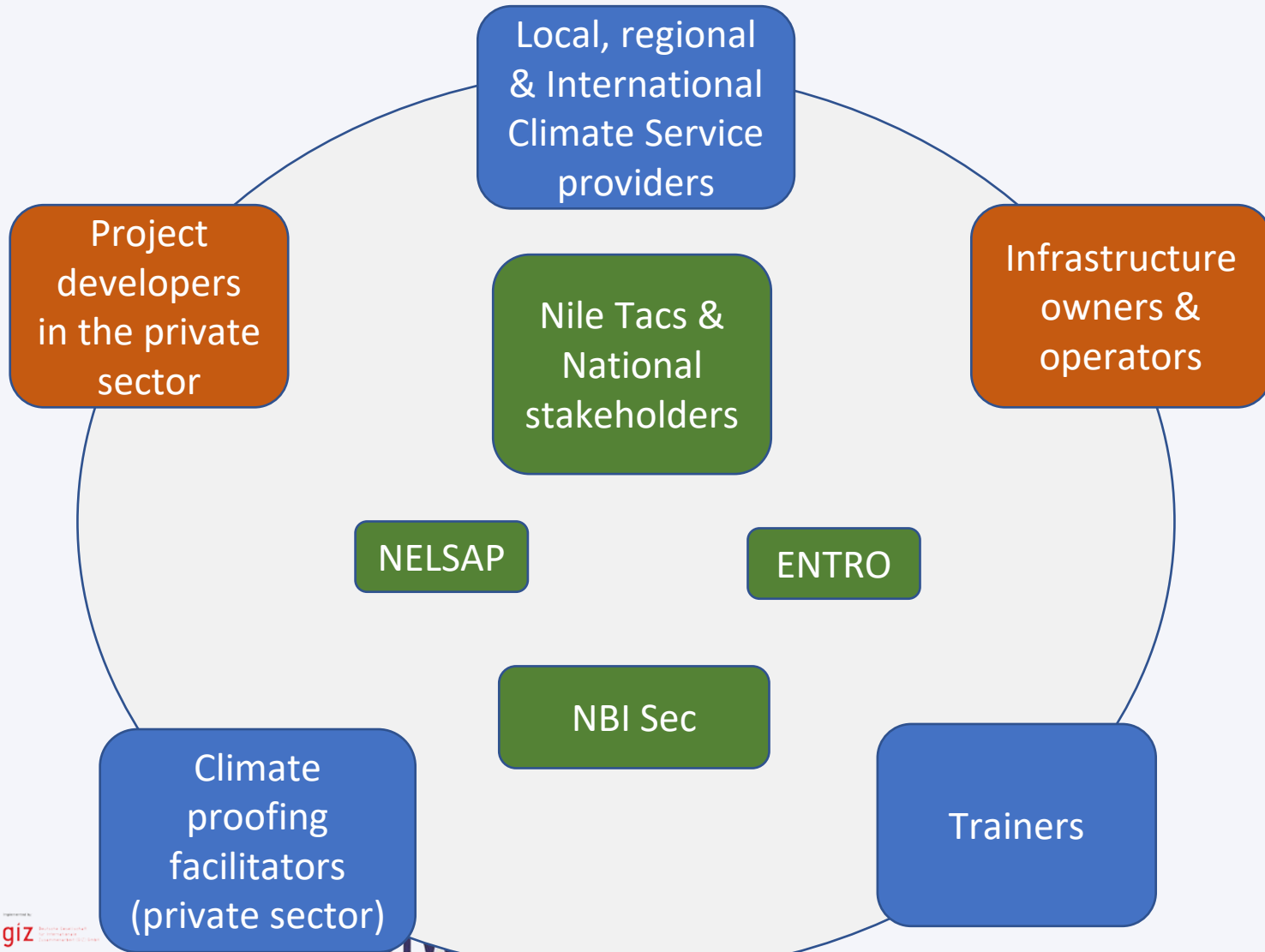
Climate Proofing at the project level

Project Screening & Scoping

Climate Risk Assessment

Adaptation Assessment & Implementation

Community of Practice of the Climate Service Knowledge Management Hub



Integration into the Climate Service Knowledge Management Hub

SECTOR POLICY,
PLANNING & REGULATION

PROJECT
IDENTIFICATION

PROJECT
PREPARATION






RESOURCE
MOBILIZATION

OPERATION &
MAINTENANCE

Intro ————— Climate Proofing guidance

Project identification is the selection of the least cost project configuration from the available resources or alternatives and translate that into a suitable project for the stated purpose. The project identification stage typically consists of a reconnaissance study and prefeasibility studies. In some cases, project identification may be done as part of national or regional water resource inventories rather than a project specific study.

The findings of the project Identification stage are documented in a reconnaissance report and prefeasibility report.

Scoping	Risk Assessment	Risk Treatment	Monitoring & Evaluation
<p>1. Risk Assessment</p> <p>Scope Risk Assessment consists of identification, analysis and evaluation of risks and opportunities. The results of the Risk assessment are documented in a risk/opportunity register. At the project identification stage, each project alternative should have a separate risk register.</p> <p>Process The analysis may be qualitative, semi-quantitative or quantitative.</p> <ul style="list-style-type: none"> ➤ Prepare a risk/opportunity register. This is a record of the potential risks and opportunities related to the project(s) focusing on climate sensitive issues. The risk register is the documentation of the outcome of the three steps (i.e., 1) Identification, 2) analysis/screening and 3) evaluation) ➤ Identification of risks: Identification of risks should ensure that no risk is unwittingly excluded. This should cover all potential climate stressors relevant to the project. Examples (link). The register should include the threats/opportunities associated with each climate risk and/or stressor and an estimate of the likelihood and potential loss/gain of each threat/opportunity. Figure 12 shows an example of a risk /opportunity register. Note that the list of stressors in the example are not exhaustive. The risk team and stakeholders must identify all the stressors and then list them. 			<p> Intro video</p> <p> Manual</p> <p> Peer-learning & exchange</p> <p> Best practices</p> <p> Climate Service</p>



NILE BASIN INITIATIVE
INITIATIVE DU BASSIN DU NIL



THANK YOU!